



SCREEN WIPER SOLUTIONS

Marine Parts Catalogue 2023

Curved Screen & Flat Wiper Blades

Bosch stainless steel curved screen wiperblades and flat blades are built to withstand the demands of marine usage and are available in a range of sizes up to 1300 mm.

Note: when ordering, use as suffice Part # with the length required in inches. eg: B140 - 39 or FB -18



80012800
Blade Block



Part #	Lenth mm	Bolt	Saddle
B140 - 14 16 18 20 22	340 400 450 500 550	4.8 mm	14 mm



Part #	Lenth mm	Bolt	Saddle
B160 - 24 26 28	600 650 700	4.8 mm 6 mm	14 mm



Part #	Lenth mm	Bolt	Saddle
B160 - 32 38 39	800 900 1000	6 mm 8 mm	26 mm
B160 - 48 50	1200 1300	6 mm 8 mm	26 mm



Part #	Lenth mm	Saddle
FB 10 - FB32	450 500 550 650 700	14 mm
FB WSL xxx	355 400 460 510 560 610	6 mm



Part #	Length mm	Saddle	Part #	Length mm	Saddle
21-409	400	10 mm	21-412	350	10 mm
			21-413	450	10 mm

Curved Screen Wiper Blades

Tru Vision marine windscreen wiper blades are made from stainless steel and are available in either polished stainless steel or black finish.

Note: When ordering use WEM suffixed with blade length required eg: WEM-500B for black or WEM-800SS for polished ss



Blade	Length mm	Blade Bolt	Saddle
WEM-xxx	500 550 600 650 700	4 4.8 6 mm	14 mm

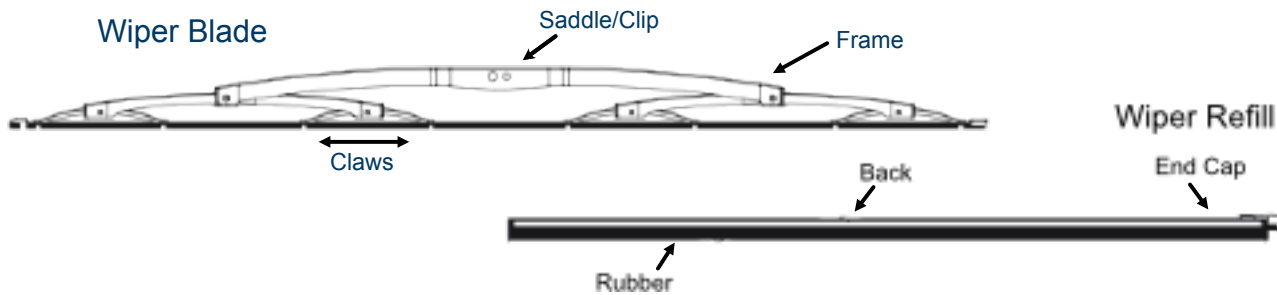


Blade	Length mm	Blade Bolt	Saddle
WEM-xxx	800 900 1 000	6 8 mm	22 26 mm



Blade	Length mm	Connection
WEM700A	700 mm	Hook 9x4

Wiper Refills



Part #	Blade Length mm	Suits Blades	Width	Back
TV1000	1000 mm	Multi fit B140 B160 WEM-800 - 1000	8 9.5 mm	Plastic
80262200 80262201 80262202	800 900 1000 mm	FB-xx	8 9.5 mm	Rubber
EVMN710	650 750	WEM-500 - 700	8 mm	Metal

Tru Vision Wiper Arms



Marine

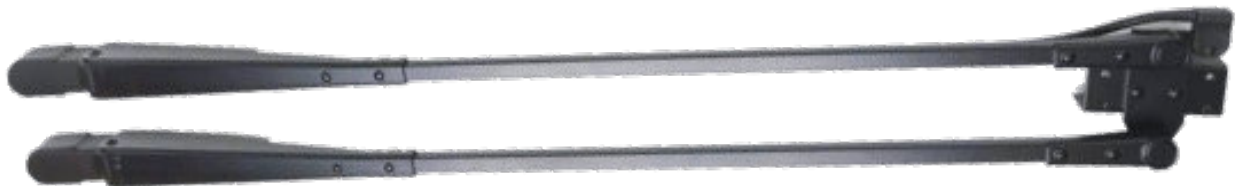
Tru Vision marine blades are manufactured in stainless steel and are available in polished stainless steel or black finish. Add 'B' to the part number to order black finish.



Radial Arm	Length mm	Shaft Head	Idler Head	Bridge	Blade Clip Hook
WEM1230-Pxx	400 500	M8-10	8 mm	50 mm	14 mm
WEM1230-Rxx	400 450 500	M8-10			9 mm



Arm	Length mm	Shaft Head	Idler Head	Bridge Centres	Blade Clip
WEM1530-P-xx	450 up to 700	M8 - 12 DIN	M8 - 12 DIN	60 mm	14 mm



Arm	Length mm	Shaft Head	Idler Head	Bridge Centres	Blade Clip
WEM2930-800-1000 S/STEEL	800 up to 1 000	M8 - 12 DIN	M8 - 12 DIN	60 mm	26 mm
WEM2930B-800-1000 S/STEEL BLACK	800 up to 1 000	M8 - 12 DIN	M8 - 12 DIN	60 mm	26 mm



Radial Arm	Pantograph	Length mm	Shaft Head	Bridge	Blade Clip Hook
TC444-35-45ss	TC555-35-45ss	350 up to 450	13.6 mm	60 mm	16 mm 13.6 mm
TC444-45-55ss	TC555-45-55ss	450 up to 550	13.6 mm	60 mm	16 mm 13.6 mm
TC444-50-60ss	TC555-50-60ss	500 up to 600	13.6 mm	60 mm	16 mm 13.6 mm

All arms available black powdered coated stainless steel or polished stainless steel

Marine Wiper Arms



Arm	Length mm	Shaft Head	Idler Head	Bridge Centres	Blade Clip
P84-xxTJ	610 to 1520	16 DIN	16 DIN	60 mm	14 mm 20mm



Arm	Length mm	Shaft Head	Idler Head	Bridge Centres	Blade Clip
P615-xxTJ	610 up to 990	12 DIN	12 DIN	50 mm	14 mm
P665-xxTJ P635 P655	560 up to 990	12 DIN	12 DIN	60 mm	14 mm
P680-xxTJ	735 up to 990	16 DIN	16 DIN	60 mm	20 mm

Bridges



80040600
Swivel T-Piece
SUB ASSY | 60 CRS



80040500
Swivel T-Piece
SUB ASSY | 50 CRS



80103000
Wiper Blade Bracket



80208000
T-Piece 14mm |
50 CRS Clip



80103000
Wiper Blade Bracket

Springs



80096300



80311100



80012000



80002600

Hepworth Wiper Arms



Marine



Arm	Length mm	Main Head	Idler Head	Bridge CRS	Blade Clip
P5-xx	300 mm to 510 mm	12 DIN	10 DIN	50 mm	14 mm



Arm	Length mm	Main Head	Idler Head	Bridge CRS	Blade Clip
P612-xx	310-710	12 DIN	Thread	50 mm	14 mm
P613-xxTJ	310-760	12 DIN	10 DIN	50 mm	14 mm
P611-xxTJ	310-760	12 DIN	10 DIN	60 mm	14 mm



Arm	Length mm	Main Head	Idler Head	Bridge CRS	Blade Clip
P614-xxTJ	340 to 560	12 DIN	12 DIN	50 mm	14 mm



Arm	Length mm	Shaft Head	Blade Clip
F6-xxTJ	255 up to 510	12 DIN	14 mm
F63-xx	300 up to 710	12 DIN	14 mm
F75-xx	736 up to 990	12 DIN	14 mm
F73-xx	710 up to 990	12 DIN	20 mm



20Nm Medium Duty



Can be used in combination with the following Controllers:

- Carling Switch
- Cole Hersee Switch
- Wynn 8224 BusControl
- Pine Controller
- Toggle Switch

IDEAL FOR LOW SPEED VESSELS WITH SMALL SIZED WINDOWS

WIPER ARMS & BLADES

• Pantograph

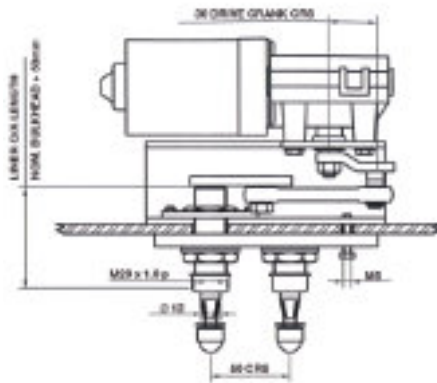
P613 Medium Duty
Lengths 12" to 24" (310mm to 610mm) nom
Drive Head 12mm
Blade Clip 14mm

• Pendulum

F63 Medium Duty
Lengths 12" to 28" (310mm to 710mm) nom
Drive Head 12mm
Blade Clip 14mm

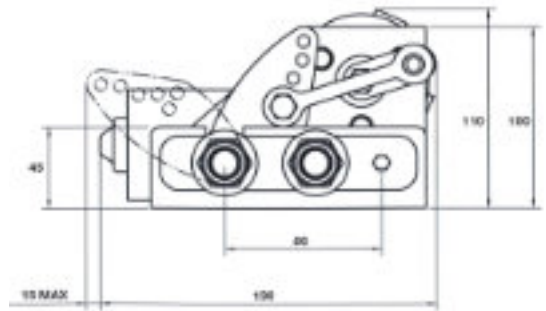
• Blades

B160 Curved Blade, StainlessSteel
Lengths 12" to 24" (310mm to 610mm) nom



SPECIFICATIONS

Standard Details	2 Speed; Self Parking; Insulated Earth Return; 12v and 24v
Angles of Arc	Variable - at stated angles
Pantograph Units	40°, 50°, 60°, 70°, 80°, 90°
Pendulum Units	40°, 50°, 60°, 70°, 80°, 90°
Spindle Centres	Between Drive Liner & Idler = 50mm
Drive Liner	M20 - BrassLiner/12mm SS Spindle
Liner Overall Length	Bulkhead Thickness+ 65mm
Idler Liner	M20 - BrassLiner/12mm SS Spindle
Bracket	No notation used for Bracket
Unit Weight	Allowing for the maximum arm and blade lengths; 3.5Kgs (7.7 lbs)



30Nm Medium Duty



Can be used in combination with the following Controllers:

- Carling Switch
- Cole Hersee Switch
- Wynn 8224 BusControl
- Pine Controller
- Toggle Switch

IDEAL FOR AVERAGE SPEED VESSELS WITH MEDIUM SIZED WINDOWS

WIPER ARMS & BLADES

• Pantograph

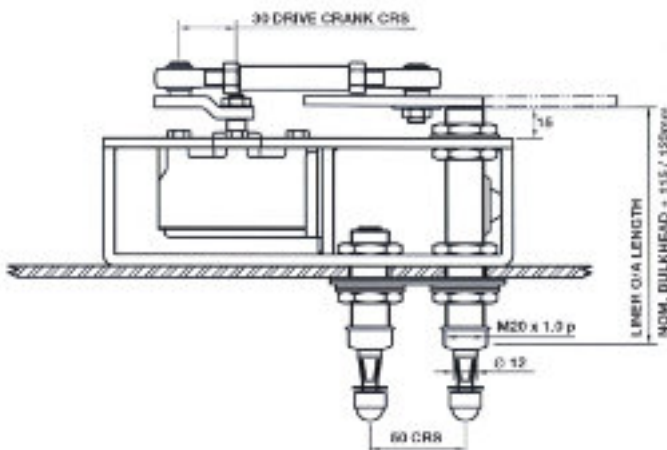
P613 Medium Duty
Lengths 12" to 24" (310mm to 610mm) nom
Drive Head 12mm
Blade Clip 14mm

• Pendulum

F63 Medium Duty
Lengths 12" to 28" (310mm to 710mm) nom
Drive Head 12mm
Blade Clip 14mm

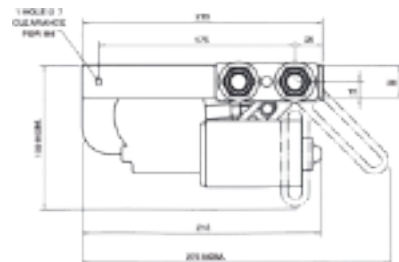
• Blades

B160 Curved Blade, StainlessSteel
Lengths 12" to 24" (310mm to 610mm) nom



SPECIFICATIONS

Standard Details	2 Speed; Self Parking; Insulated Earth Return; 12v and 24v
Angles of Arc - Fixed:	
Pantograph Units	25° to 90° (in 5° increments only)
Pendulum Units	25° to 115° (in 5° increments only)
Angles of Arc - Variable:	
Pantograph Units	35°, 40°, 45°, 50°, 55°, 60°, 70°, 80°, 90°
Pendulum Units	35°, 40°, 45°, 50°, 55°, 60°, 70°, 80°, 90°, 100°, 110°, 120°
Spindle Centres	Between Drive Liner & Idler = 50mm Pantograph Units only
Drive Liner	M20 - Brass Liner/12mm SS Spindle Pantograph & Pendulum Units
Idler Liner	M20 - Brass Liner/12mm SS Spindle Pantograph Units only
Liner Overall Length	Bulkhead Thickness + 120mm Liners over 125mm are available at extra cost
Bracket	C - Compact Bracket
Unit Weight	Allowing for the maximum arm and blade lengths; 4Kgs (8.8 lbs)



HEPWORTH MARINE
INTERNATIONAL



80Nm Extra Heavy Duty Window Wiper

TO HIGH SPEED VESSELS

LOW VOLTAGE SYSTEMS
IDEAL FOR AVERAGE

Can be used in combination with the following Controllers:

- Carling Switch
- Cole Hersee Switch
- Wynn 8224 BusControl
- Pine Controller
- Toggle Switch

WIPER ARMS & BLADES

• Pantograph Arms

P84 Heavy Duty
Lengths 24" to 60" (610mm to 1525mm) nom
Drive Head 16mm
Blade Clip 14mm & 20mm

• Pendulum Arms

F80 Heavy Duty
Lengths 24" to 60" (610mm to 1525mm) nom
Drive Head 16mm
Blade Clip 14mm

F81 Heavy Duty
Lengths 24" to 60" (610mm to 1525mm) nom
Drive Head 16mm
Blade Clip 20mm

• Blades

B160 Curved Blade, StainlessSteel
Lengths 12" to 28" (310mm to 710mm) nom

For use with arm types:

Pendulum F80
Pantograph P84

B160 Curved Blade, StainlessSteel
Lengths 32" (810mm), 36" (915mm),
39" (1000mm)

For use with arm types:

Pendulum F81
Pantograph P84

SPECIFICATIONS

Standard Details 2 Speed; Self Parking; Insulated Earth Return; 12v and 24v

Angles of Arc - Fixed:

Pantograph Units 25° to 90° (in 5° increments only)

Pendulum Units 25° to 115° (in 5° increments only)

Angles of Arc - Variable:

Pantograph Units 40° to 90° (in 5° increments only)

Pendulum Units 40° to 90° (in 5° increments only)

Spindle Centres Between Drive Liner & Idler = 60mm Pantograph Units only

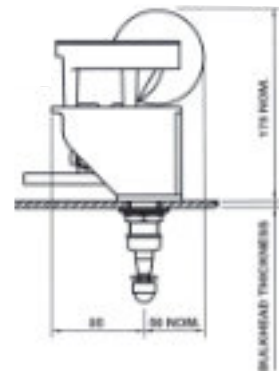
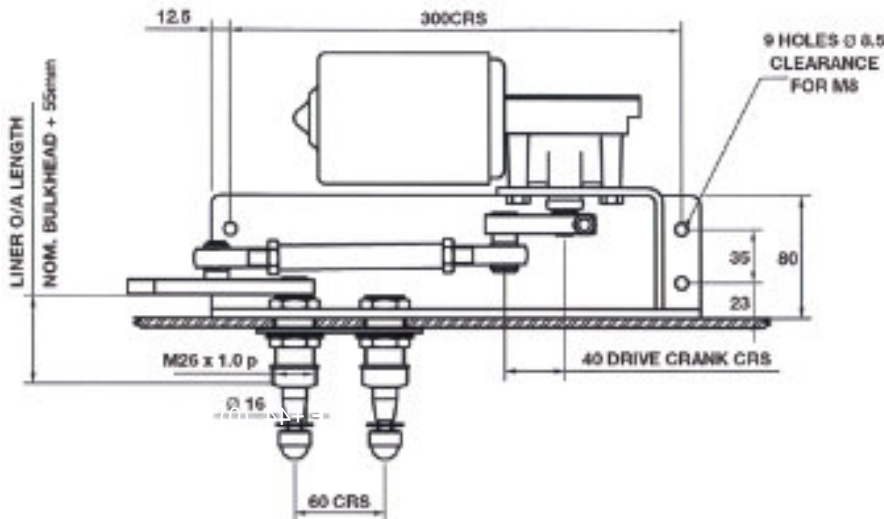
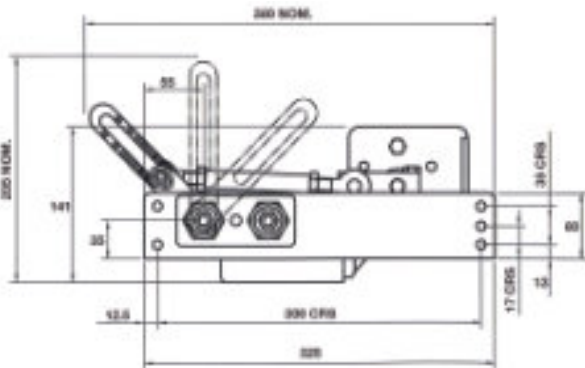
Drive Liner M26 - BrassLiner/16mm SS Spindle Pantograph & Pendulum Units

Idler Liner M26 - BrassLiner/16mm SS Spindle Pantograph Units only

Liner Overall Length Bulkhead Thickness + 55mm

Bracket C - Compact Bracket

Unit Weight Allowing for the maximum arm and blade lengths; 8Kgs (17.6 lbs)



HEPWORTH MARINE
INTERNATIONAL

WIPER ARMS & BLADES

• Pantograph Arms

P615 Medium Duty
 Lengths 12" to 39" (310mm to 990mm) nom
 Drive Head 12mm
 Idler Head 12mm
 Blade Clip 14mm

P620 Medium Duty
 Lengths 12" to 39" (310mm to 990mm) nom
 Drive Head 12mm
 Blade Clip 14mm

• Pendulum Arms

F63 Medium Duty
 Lengths 12" to 39" (310mm to 990mm) nom
 Drive Head 12mm
 Blade Clip 14mm

F73 Medium Duty
 Lengths 12" to 39" (310mm to 990mm) nom

• Blades

B160 Curved Blade, Stainless Steel
 Lengths 12" to 28" (310mm to 710mm) nom
 32" (810mm) nom

IDEAL FOR AVERAGE
 TO HIGH SPEED VESSELS

SPECIFICATIONS

Standard Details 2 Speed; Self Parking; Insulated
 Earth Return; 12v, 24v, 110v

Angles of Arc - Fixed:

Pantograph Units 25° to 90° (in 5° increments only)
 Pendulum Units 25° to 115° (in 5° increments only)

Angles of Arc - Variable:

Pantograph Units 35°, 40°, 45°, 50°, 55°, 60°, 70°, 80°, 90°

Pendulum Units 35°, 40°, 45°, 50°, 55°, 60°, 70°, 80°, 90°, 100°, 110°, 120°

Spindle Centres Between Drive Liner & Idler = 50mm
 Pantograph Units only

Drive Liner M20 - Brass Liner/12mm SSSpindle
 Pantograph & Pendulum Units

Idler Liner M20 - Brass Liner/12mm SSSpindle
 Pantograph Units only

Liner Overall Length Bulkhead Thickness + 120mm
 Liners over 125mm are available at extra cost

Bracket C - Compact Bracket

Unit Weight Allowing for the maximum arm and
 blade lengths; 4Kgs (8.8 lbs)



50Nm Heavy Duty

Can be used in
 combination with the
 following Controllers:

For 12/24v motors:

- Carling Switch
- Cole Hersee Switch
- Wynn 8224 Bus Control
- Pine Controller
- Toggle Switch

For 110 vdc motor:

- 110 vdc controller
- Toggle switch
- Wynn 8272

