



**SCREEN WIPER SOLUTIONS**

## **80 / 110NM SPECIFICATIONS**

<b>Unit Type</b>	<b>Voltage</b>	<b>Arc of Wipe</b>	<b>Liner</b>	<b>Idler</b>	<b>Bracket</b>
<b>80NM</b>	<b>24</b>	<b>090</b>	<b>057</b>	<b>16</b>	<b>R</b>

### **Standard Unit Details**

2 Speed • Self Parking • Insulated Earth Return • EMC Filter

### **Angles of Arc**

Fixed • Pendulum Units: 25 to 115 degrees • Pantograph Units: 25 to 90 degrees

### **Spindle Centres**

Between Drive Liner and Idler = 60mm

### **Drive Liner: M26**

Brass Liner / 16mm Spindle • Liner lengths = Bulkhead + 55mm •  
Liners over 150mm available at extra cost

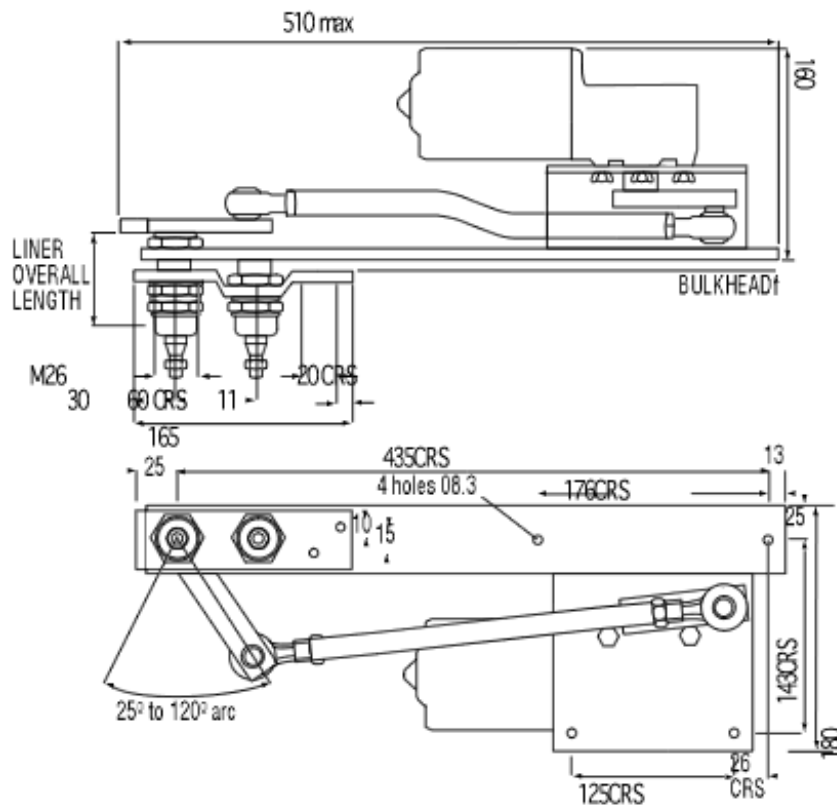
### **Idler: 16**

M26 Liner / 16mm Spindle • Arms P81

**Bracket: L** - Left Hand Bracket • **R** - Right Hand Bracket

### **Unit Weight**

Allowing for the maximum arm and blade lengths: 9.2Kgs (20.0 lbs)



## WIPER ARMS AND BLADES

### Pantograph Arms

#### P81

Heavy Duty Fixed.

Lengths:

24" to 60" (610mm/1525mm)  
max

20mm & 14mm Blade Clip  
(included)

**Driver & Idler Heads:** 16mm

### Pendulum Arms

#### F80

Heavy Duty Fixed.

Lengths:

24" to 60" (610mm/1525mm)  
14mm Blade Clip

**Drive Head:** 16mm

#### F81

Heavy Duty Fixed.

Lengths:

24" to 60" (610mm/1525mm)  
20mm Blade Clip

**Drive Head:** 16mm

### Blades

#### B140

Curved Blade .

Lengths:

12" / 28" (310mm / 710mm)

Lengths:

32" (810mm), 36" (960mm)  
& 39" (1000mm)

## 80MN / 110NM Linkage Configurations

When very wide or multiple windows are to be swept, we offer a comprehensive range of swept area solutions, utilising the 80NM / 110NM drive unit operating either two or three arms and blades off one motor. This offers customers the benefit of simpler installations as well as a cost saving.

## ELECTRICAL DETAILS

50NM Motor Unit		
VOLTAGE	STARTING CURRENT	RUNNING CURRENT
24v	5 amps	2 amp

### Wiring the Motor Unit to a Rotary Switch

Motor	Switch
31b (self park reversal feed)	<b>position P</b>
53 (low speed)	<b>position L</b>
53a (self park) and positive DC ship's supply	<b>position B</b>
53b (high speed)	<b>position H</b>
31 (earth connection)	<b>the negative ship's supply</b>
Washer Pump	<b>position W</b>

### Wiring the Motor Unit to a Toggle Switch

Motor	Switch
31b (self park reversal feed)	<b>position 8</b>
53 (low speed)	<b>position 4</b>
53a (self park) and positive DC ship's supply	<b>position 6</b>
53b (high speed)	<b>position 2</b>
31 (earth connection)	<b>the negative ship's supply</b>

### Wiring the Motor Unit to a Multi Speed Control Switch

Motor	Switch
31b (self park reversal feed)	<b>to the BLUE wire</b>
53 (low speed)	<b>to the YELLOW wire</b>
53a (self park) and positive DC ship's supply	<b>both RED wires</b>
53b (high speed)	<b>to the WHITE wire</b>
31 (earth connection) and the negative ship's supply	<b>to the BLACK wire</b>
Washer Pump	<b>to the BROWN wire</b>