



SCREEN WIPER SOLUTIONS

2NM SPECIFICATIONS

Unit Type	Voltage	Arc of Wipe	Liner	Idler
2NM	24	OVA	075	10

Standard Unit Details

1 Speed • Self Parking

Angles of Arc

Fixed 75, 90 and 105 degrees

Pendulum Units

Pantograph Units

Spindle Centres

Between Drive Liner and Idler = 50mm

Drive Liner: M20

Brass Liner / 12mm Spindle • Liner

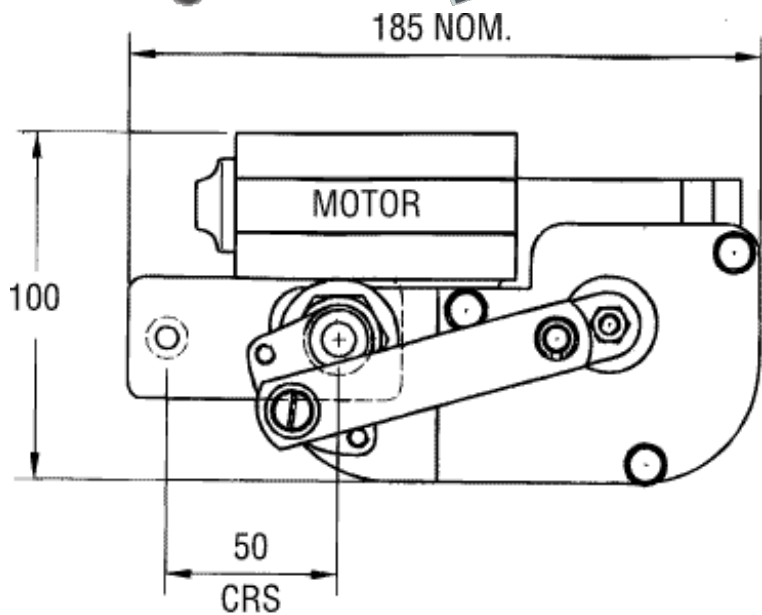
lengths = See Table Below

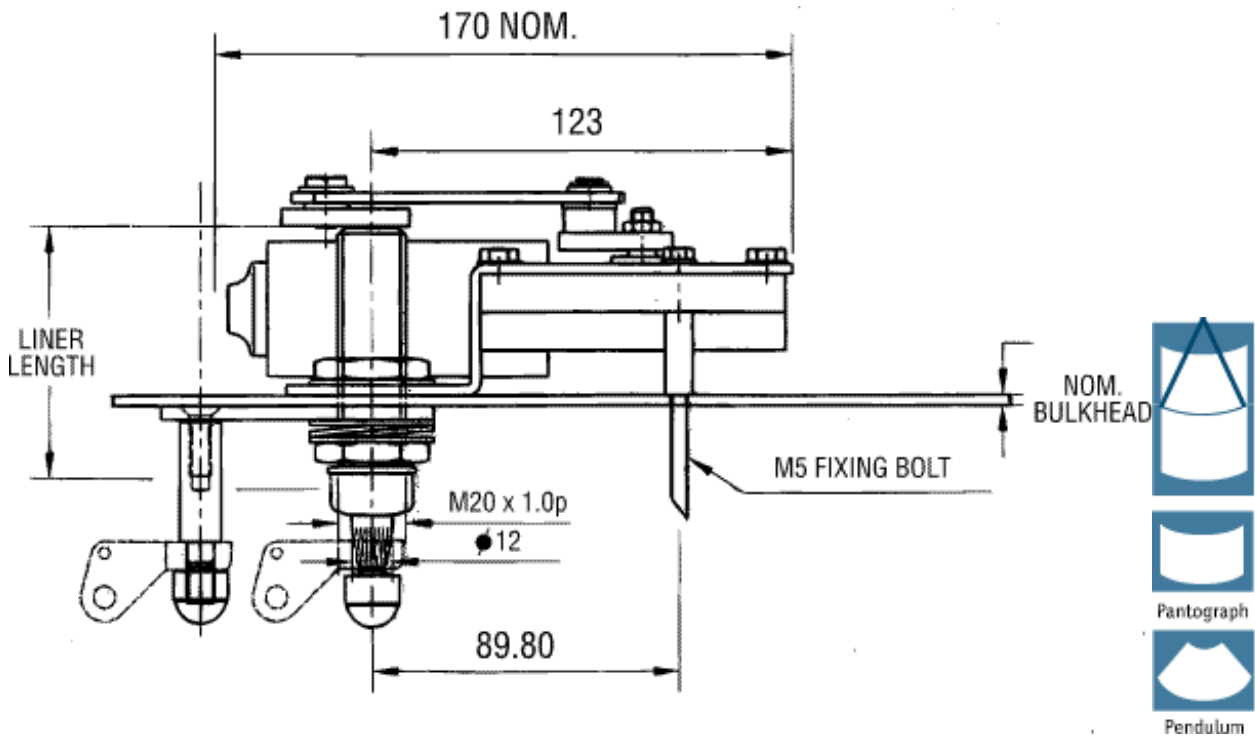
Arms P5 and F6

Unit Weight

Allowing for the maximum arm and blade lengths: 1.4Kgs (3lbs)

LINER LENGTH	BULKHEAD THICKNESS UP TO
75mm	6mm
80mm	11mm
90mm	21mm
100mm	31mm





Pantograph Arms

P5 Light Duty.
 Lengths:
 12"/20" (310mm/510mm)
 14mm Blade Clip
Drive Head: 12mm

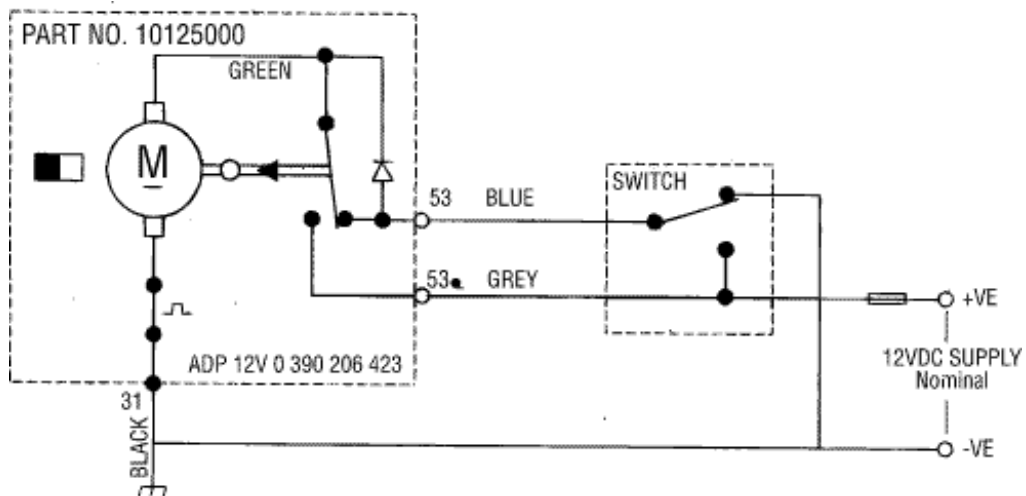
Pendulum Arms

F6 Light Duty
 10"/20" (250mm/510mm)
 14mm Blade Clip
Drive Head: 12mm

Blades

B140 Curved Blade
 Lengths:
 12" to 20" (310mm to 510mm) max.
 For use with Arm Types:
 Pendulum F6
 Pantograph P5

ELECTRICAL DETAILS



MOTOR TERMINALS

