



SCREEN WIPER SOLUTIONS

Marine Parts Catalogue 2023

Curved Screen & Flat Wiper Blades

Bosch stainless steel curved screen wiperblades and flat blades are built to withstand the demands of marine usage and are available in a range of sizes up to 1300 mm.

Note: when ordering, use as suffice Part # with the length required in inches. eg: B140 - 39 or FB -18



80012800
Blade Block



Part #	Lenth mm	Bolt	Saddle
B140 - 14 16 18 20 22	340 400 450 500 550	4.8 mm	14 mm



Part #	Lenth mm	Bolt	Saddle
B160 - 24 26 28	600 650 700	4.8 mm 6 mm	14 mm



Part #	Lenth mm	Bolt	Saddle
B160 - 32 38 39	800 900 1000	6 mm 8 mm	26 mm
B160 - 48 50	1200 1300	6 mm 8 mm	26 mm



Part #	Lenth mm	Saddle
FB 10 - FB32	450 500 550 650 700	14 mm
FB WSL xxx	355 400 460 510 560 610	6 mm



Part #	Length mm	Saddle	Part #	Length mm	Saddle
21-409	400	10 mm	21-412	350	10 mm
			21-413	450	10 mm

Curved Screen Wiper Blades

Tru Vision marine windscreen wiper blades are made from stainless steel and are available in either polished stainless steel or black finish.

Note: When ordering use WEM suffixed with blade length required eg: WEM-500B for black or WEM-800SS for polished ss



Blade	Length mm	Blade Bolt	Saddle
WEM-xxx	500 550 600 650 700	4 4.8 6 mm	14 mm

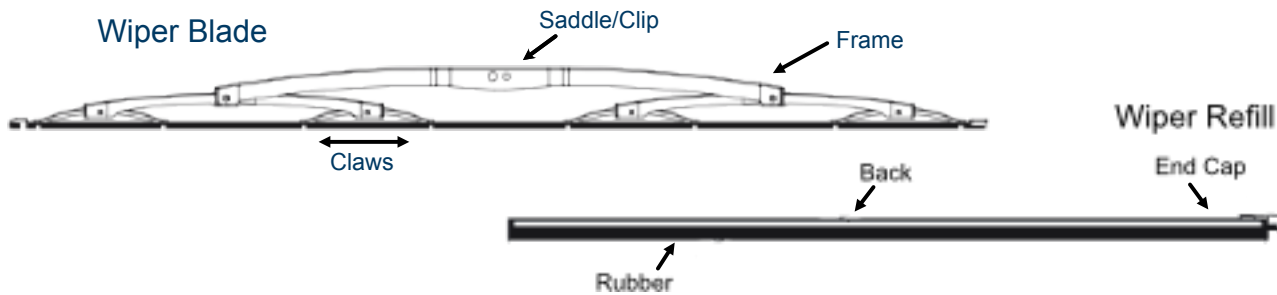


Blade	Length mm	Blade Bolt	Saddle
WEM-xxx	800 900 1 000	6 8 mm	22 26 mm



Blade	Length mm	Connection
WEM700A	700 mm	Hook 9x4

Wiper Refills



Part #	Blade Length mm	Suits Blades	Width	Back
TV1000	1000 mm	Multi fit B140 B160 WEM-800 - 1000	8 9.5 mm	Plastic
80262200 80262201 80262202	800 900 1000 mm	FB-xx	8 9.5 mm	Rubber
EVMN710	650 750	WEM-500 - 700	8 mm	Metal

Tru Vision Wiper Arms



Marine

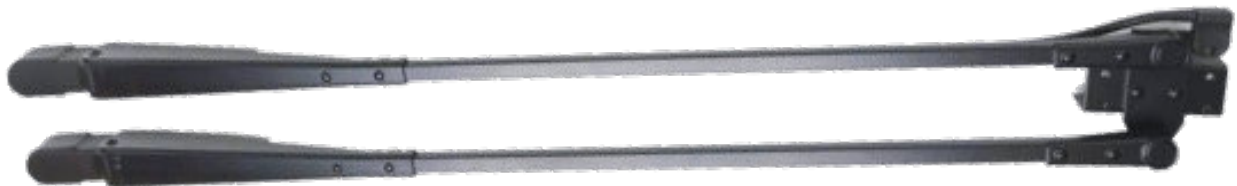
Tru Vision marine blades are manufactured in stainless steel and are available in polished stainless steel or black finish. Add 'B' to the part number to order black finish.



Radial Arm	Length mm	Shaft Head	Idler Head	Bridge	Blade Clip Hook
WEM1230-Pxx	400 500	M8-10	8 mm	50 mm	14 mm
WEM1230-Rxx	400 450 500	M8-10			9 mm



Arm	Length mm	Shaft Head	Idler Head	Bridge Centres	Blade Clip
WEM1530-P-xx	450 up to 700	M8 - 12 DIN	M8 - 12 DIN	60 mm	14 mm



Arm	Length mm	Shaft Head	Idler Head	Bridge Centres	Blade Clip
WEM2930-800-1000 S/STEEL	800 up to 1 000	M8 - 12 DIN	M8 - 12 DIN	60 mm	26 mm
WEM2930B-800-1000 S/STEEL BLACK	800 up to 1 000	M8 - 12 DIN	M8 - 12 DIN	60 mm	26 mm



Radial Arm	Pantograph	Length mm	Shaft Head	Bridge	Blade Clip Hook
TC444-35-45ss	TC555-35-45ss	350 up to 450	13.6 mm	60 mm	16 mm 13.6 mm
TC444-45-55ss	TC555-45-55ss	450 up to 550	13.6 mm	60 mm	16 mm 13.6 mm
TC444-50-60ss	TC555-50-60ss	500 up to 600	13.6 mm	60 mm	16 mm 13.6 mm

All arms available black powdered coated stainless steel or polished stainless steel

Marine Wiper Arms



Arm	Length mm	Shaft Head	Idler Head	Bridge Centres	Blade Clip
P84-xxTJ	610 to 1520	16 DIN	16 DIN	60 mm	14 mm 20mm



Arm	Length mm	Shaft Head	Idler Head	Bridge Centres	Blade Clip
P615-xxTJ	610 up to 990	12 DIN	12 DIN	50 mm	14 mm
P665-xxTJ P635 P655	560 up to 990	12 DIN	12 DIN	60 mm	14 mm
P680-xxTJ	735 up to 990	16 DIN	16 DIN	60 mm	20 mm

Bridges



80040600
Swivel T-Piece
SUB ASSY | 60 CRS



80040500
Swivel T-Piece
SUB ASSY | 50 CRS



80103000
Wiper Blade Bracket



80208000
T-Piece 14mm |
50 CRS Clip



80103000
Wiper Blade Bracket

Springs



80096300



80311100



80012000



80002600

Hepworth Wiper Arms



Marine



Arm	Length mm	Main Head	Idler Head	Bridge CRS	Blade Clip
P5-xx	300 mm to 510 mm	12 DIN	10 DIN	50 mm	14 mm



Arm	Length mm	Main Head	Idler Head	Bridge CRS	Blade Clip
P612-xx	310-710	12 DIN	Thread	50 mm	14 mm
P613-xxTJ	310-760	12 DIN	10 DIN	50 mm	14 mm
P611-xxTJ	310-760	12 DIN	10 DIN	60 mm	14 mm



Arm	Length mm	Main Head	Idler Head	Bridge CRS	Blade Clip
P614-xxTJ	340 to 560	12 DIN	12 DIN	50 mm	14 mm



Arm	Length mm	Shaft Head	Blade Clip
F6-xxTJ	255 up to 510	12 DIN	14 mm
F63-xx	300 up to 710	12 DIN	14 mm
F75-xx	736 up to 990	12 DIN	14 mm
F73-xx	710 up to 990	12 DIN	20 mm



20Nm Medium Duty



Can be used in combination with the following Controllers:

- Carling Switch
- Cole Hersee Switch
- Wynn 8224 BusControl
- Pine Controller
- Toggle Switch

IDEAL FOR LOW SPEED VESSELS WITH SMALL SIZED WINDOWS

WIPER ARMS & BLADES

• Pantograph

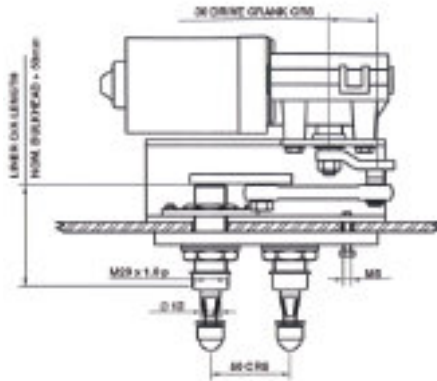
P613 Medium Duty
Lengths 12" to 24" (310mm to 610mm) nom
Drive Head 12mm
Blade Clip 14mm

• Pendulum

F63 Medium Duty
Lengths 12" to 28" (310mm to 710mm) nom
Drive Head 12mm
Blade Clip 14mm

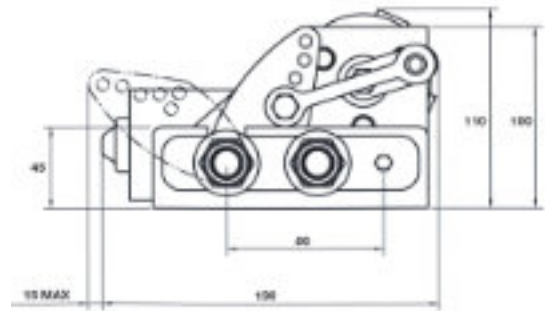
• Blades

B160 Curved Blade, StainlessSteel
Lengths 12" to 24" (310mm to 610mm) nom



SPECIFICATIONS

Standard Details	2 Speed; Self Parking; Insulated Earth Return; 12v and 24v
Angles of Arc	Variable - at stated angles
Pantograph Units	40°, 50°, 60°, 70°, 80°, 90°
Pendulum Units	40°, 50°, 60°, 70°, 80°, 90°
Spindle Centres	Between Drive Liner & Idler = 50mm
Drive Liner	M20 - BrassLiner/12mm SS Spindle
Liner Overall Length	Bulkhead Thickness+ 65mm
Idler Liner	M20 - BrassLiner/12mm SS Spindle
Bracket	No notation used for Bracket
Unit Weight	Allowing for the maximum arm and blade lengths; 3.5Kgs (7.7 lbs)



30Nm Medium Duty



Can be used in combination with the following Controllers:

- Carling Switch
- Cole Hersee Switch
- Wynn 8224 BusControl
- Pine Controller
- Toggle Switch

IDEAL FOR AVERAGE SPEED VESSELS WITH MEDIUM SIZED WINDOWS

WIPER ARMS & BLADES

• Pantograph

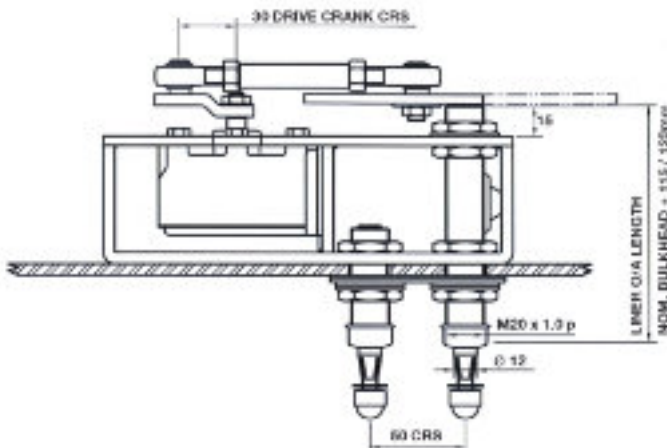
P613 Medium Duty
Lengths 12" to 24" (310mm to 610mm) nom
Drive Head 12mm
Blade Clip 14mm

• Pendulum

F63 Medium Duty
Lengths 12" to 28" (310mm to 710mm) nom
Drive Head 12mm
Blade Clip 14mm

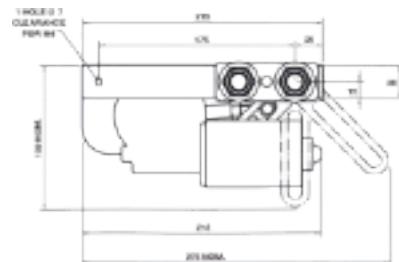
• Blades

B160 Curved Blade, StainlessSteel
Lengths 12" to 24" (310mm to 610mm) nom



SPECIFICATIONS

Standard Details	2 Speed; Self Parking; Insulated Earth Return; 12v and 24v
Angles of Arc - Fixed:	
Pantograph Units	25° to 90° (in 5° increments only)
Pendulum Units	25° to 115° (in 5° increments only)
Angles of Arc - Variable:	
Pantograph Units	35°, 40°, 45°, 50°, 55°, 60°, 70°, 80°, 90°
Pendulum Units	35°, 40°, 45°, 50°, 55°, 60°, 70°, 80°, 90°, 100°, 110°, 120°
Spindle Centres	Between Drive Liner & Idler = 50mm Pantograph Units only
Drive Liner	M20 - Brass Liner/12mm SS Spindle Pantograph & Pendulum Units
Idler Liner	M20 - Brass Liner/12mm SS Spindle Pantograph Units only
Liner Overall Length	Bulkhead Thickness + 120mm Liners over 125mm are available at extra cost
Bracket	C - Compact Bracket
Unit Weight	Allowing for the maximum arm and blade lengths; 4Kgs (8.8 lbs)



HEP WORTH MARINE
INTERNATIONAL

WIPER ARMS & BLADES

• Pantograph Arms

P615 Medium Duty
 Lengths 12" to 39" (310mm to 990mm) nom
 Drive Head 12mm
 Idler Head 12mm
 Blade Clip 14mm

P620 Medium Duty
 Lengths 12" to 39" (310mm to 990mm) nom
 Drive Head 12mm
 Blade Clip 14mm

• Pendulum Arms

F63 Medium Duty
 Lengths 12" to 39" (310mm to 990mm) nom
 Drive Head 12mm
 Blade Clip 14mm

F73 Medium Duty
 Lengths 12" to 39" (310mm to 990mm) nom

• Blades

B160 Curved Blade, Stainless Steel
 Lengths 12" to 28" (310mm to 710mm) nom
 32" (810mm) nom

IDEAL FOR AVERAGE
 TO HIGH SPEED VESSELS

SPECIFICATIONS

Standard Details 2 Speed; Self Parking; Insulated
 Earth Return; 12v, 24v, 110v

Angles of Arc - Fixed:

Pantograph Units 25° to 90° (in 5° increments only)
 Pendulum Units 25° to 115° (in 5° increments only)

Angles of Arc - Variable:

Pantograph Units 35°, 40°, 45°, 50°, 55°, 60°, 70°, 80°, 90°

Pendulum Units 35°, 40°, 45°, 50°, 55°, 60°, 70°, 80°, 90°, 100°, 110°, 120°

Spindle Centres Between Drive Liner & Idler = 50mm
 Pantograph Units only

Drive Liner M20 - Brass Liner/12mm SSSpindle
 Pantograph & Pendulum Units

Idler Liner M20 - Brass Liner/12mm SSSpindle
 Pantograph Units only

Liner Overall Length Bulkhead Thickness + 120mm
 Liners over 125mm are available at extra cost

Bracket C - Compact Bracket

Unit Weight Allowing for the maximum arm and
 blade lengths; 4Kgs (8.8 lbs)



50Nm Heavy Duty

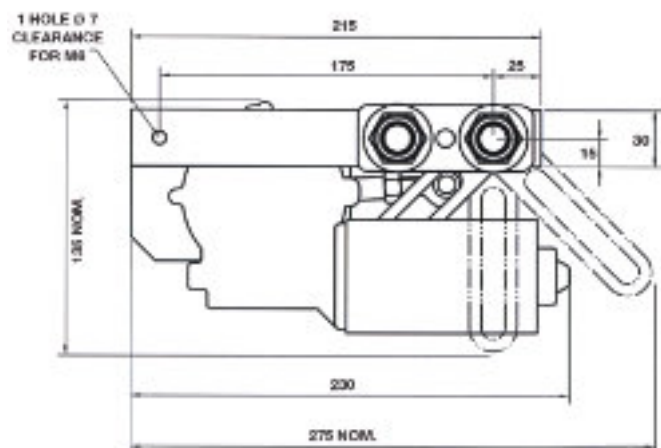
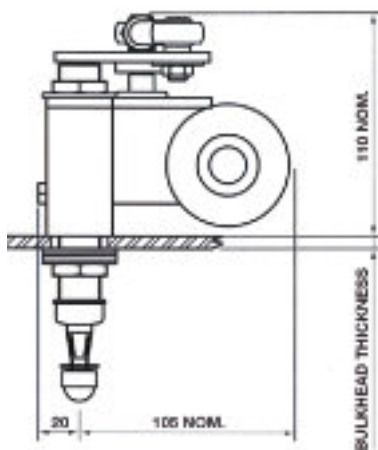
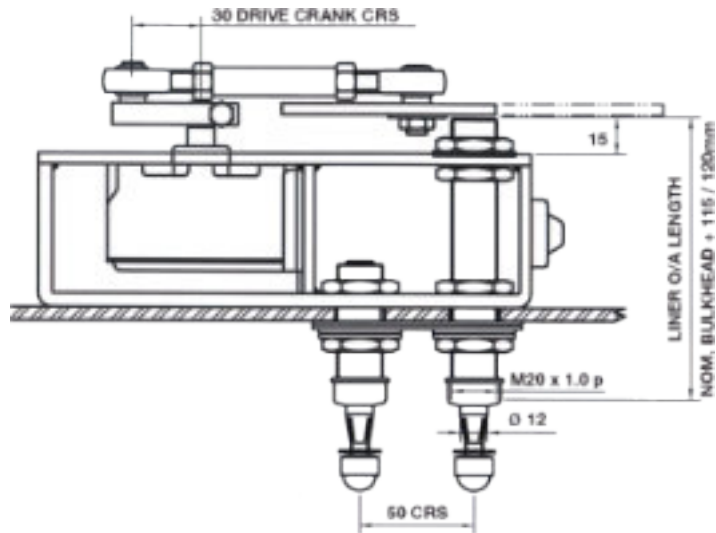
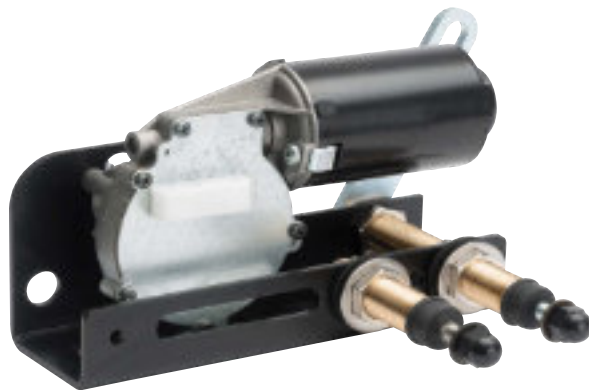
Can be used in
 combination with the
 following Controllers:

For 12/24v motors:

- Carling Switch
- Cole Hersee Switch
- Wynn 8224 Bus Control
- Pine Controller
- Toggle Switch

For 110 vdc motor:

- 110 vdc controller
- Toggle switch
- Wynn 8272





80Nm Extra Heavy Duty Window Wiper

TO HIGH SPEED VESSELS

LOW VOLTAGE SYSTEMS
IDEAL FOR AVERAGE

Can be used in combination with the following Controllers:

- Carling Switch
- Cole Hersee Switch
- Wynn 8224 BusControl
- Pine Controller
- Toggle Switch

WIPER ARMS & BLADES

• Pantograph Arms

P84 Heavy Duty
Lengths 24" to 60" (610mm to 1525mm) nom
Drive Head 16mm
Blade Clip 14mm & 20mm

• Pendulum Arms

F80 Heavy Duty
Lengths 24" to 60" (610mm to 1525mm) nom
Drive Head 16mm
Blade Clip 14mm

F81 Heavy Duty
Lengths 24" to 60" (610mm to 1525mm) nom
Drive Head 16mm
Blade Clip 20mm

• Blades

B160 Curved Blade, StainlessSteel
Lengths 12" to 28" (310mm to 710mm) nom

For use with arm types:

Pendulum F80
Pantograph P84

B160 Curved Blade, StainlessSteel
Lengths 32" (810mm), 36" (915mm),
39" (1000mm)

For use with arm types:

Pendulum F81
Pantograph P84

SPECIFICATIONS

Standard Details 2 Speed; Self Parking; Insulated Earth Return; 12v and 24v

Angles of Arc - Fixed:

Pantograph Units 25° to 90° (in 5° increments only)
Pendulum Units 25° to 115° (in 5° increments only)

Angles of Arc - Variable:

Pantograph Units 40° to 90° (in 5° increments only)
Pendulum Units 40° to 90° (in 5° increments only)

Spindle Centres Between Drive Liner & Idler = 60mm
Pantograph Units only

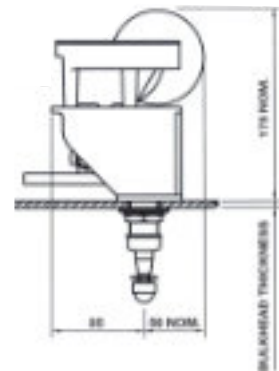
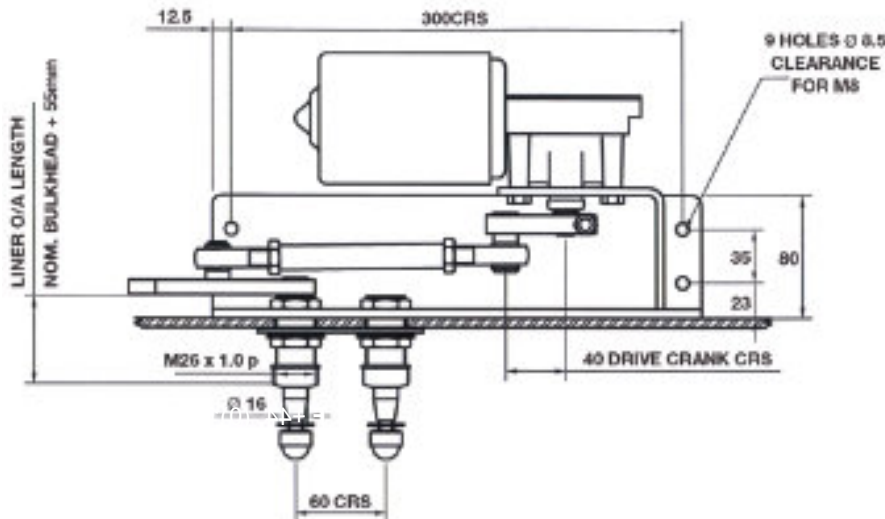
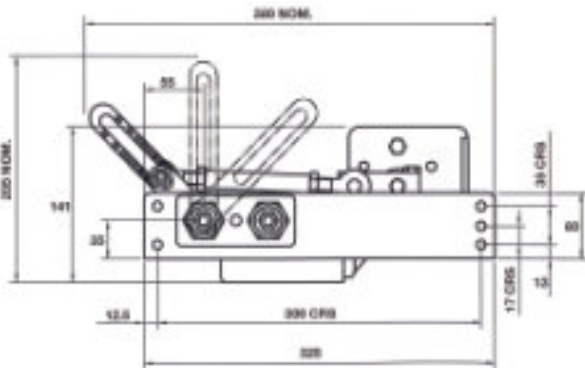
Drive Liner M26 - BrassLiner/16mm SS Spindle
Pantograph & Pendulum Units

Idler Liner M26 - BrassLiner/16mm SS Spindle
Pantograph Units only

Liner Overall Length Bulkhead Thickness + 55mm

Bracket C - Compact Bracket

Unit Weight Allowing for the maximum arm and blade lengths; 8Kgs (17.6 lbs)



HEPWORTH MARINE
INTERNATIONAL

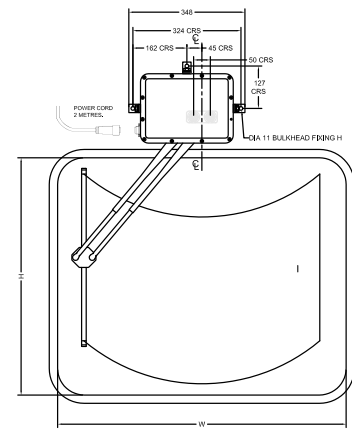
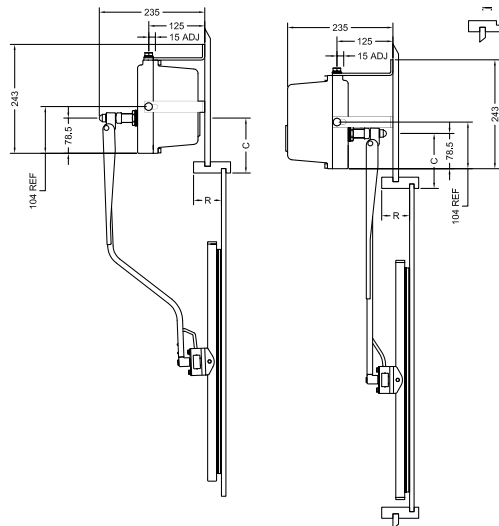
SPECIFICATIONS

Pantograph wipe arc	Fixed arc
Blade lengths	300 to 800mm in 50mm increments
Arm lengths	300 to 850mm in 50mm increments
Wipe speeds - fast/slow	50 wipes per minute / 35 wipes per minute with intermittent and parking
Voltages / Currents	12V : 3.0 amps, 24V : 1.8 amps
Spray nozzles	Travelling spray nozzles can be incorporated onto the arms (optional)
De-icing heater	Incorporated into the drive arm, is 100 watts per metre (optional)
Blades	Rigid fitted for flat glass as standard. Articulated fitted for curved glass
Control options	P/N: 0800-05 2 speed & park, Toggle switch P/N: 0800-02 2 speed, intermittent, park & spray, Rotary switch Series 3000 Control systems, 2 speed, intermittent, park with group operation Series 6200 Series 8224



Type 1850 External Pantograph Wipers

IDEAL FOR HEAVY
DUTY USAGE IN
MEDIUM
SIZED
APPLICATIONS



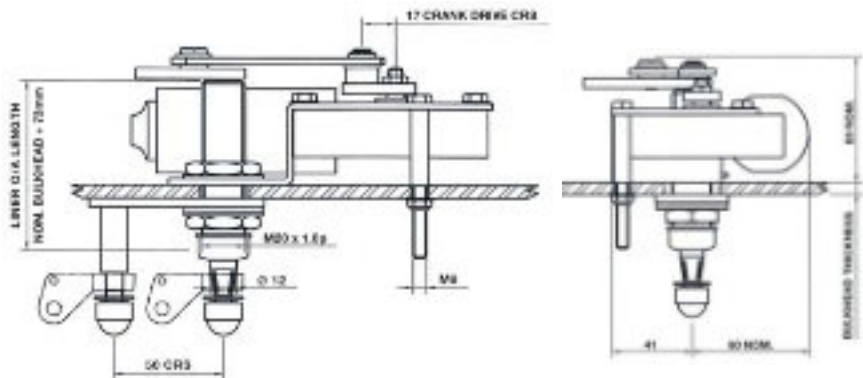
2Nm Light Duty Marine Motor

- Ideal for smaller vessels
- A compact lightweight unit
- Pantograph and pendulum
- Variable arc
- 12 and 24 volt DC
- Single speed
- Self parking standard
- Insulated earth return is optional
- Operated by a toggle switch
- F6 Pendulum Arm 10" up to 20"
- P5 Pantograph Arm 12" up to 20". Requires pantograph plate



2Nm Light Duty Window Wiper

IDEAL FOR
SMALLER
VESSELS



HEPWORTH MARINE
INTERNATIONAL

Wexco | PN SQ112 | SQ124

Marine Motor, Arm, and Blade Kit

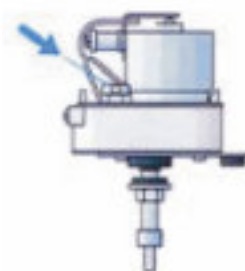
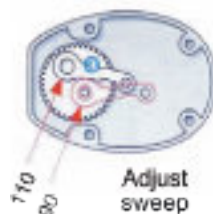
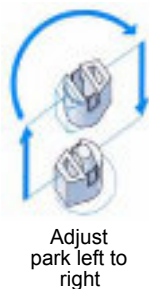
- Light duty | compact size | Stainless Steel
- CE-certified
- 12v | 24v
- Sweep: 80° or 110°
- Torque 8Nm | Speed 54 sweeps per second
- Fuse size: 3A
- Shaft length: 25 mm
- Coast to park - adjustable left or right
- SS radial arm adjustable 280 mm - 355 mm
- SS 280 mm blade



Roca | PN 521011 | PN 521012

Marine Motor, Arm, and Blade Kit

- Motor with white powder coated aluminium cover, Stainless Steel shaft, and mounting plate.
- 12v | 24v
- Adjustable sweep angle 90 or 110 degrees.
- Adjustable left or right self parking.
- Single speed motor
- 3 terminal, no switch. Fuse size 3A
- Bulkhead thickness 25 mm (1") | Shaft length 64 mm
- Black coated stainless steel arm easily adjustable from 280mm to 360mm, polymer wiper blade 280mm. Arm/blade combination up to 355 mm (14")

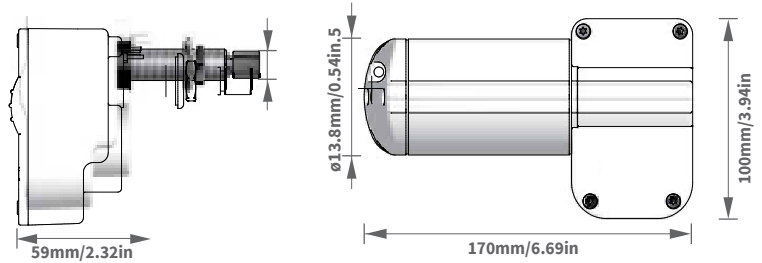


Roca W12 Series Wiper Motor | 12v | 24v



Specifications

- Self-parking (right or left)
- Stainless steel wiper shaft
- Intergrated heat sink fins for effective heat dissipation
- IP65 rated
- Insulated ground for metal, fiberglass and wooden boats

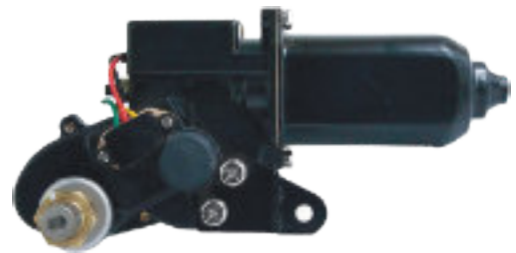


Stall Torque	Shaft Length mm	Shaft	Sweep°
12Nm	42 mm 64 mm 90 mm	13.8 mm Straight	45° - 100°

212 Series Oscilating Wiper Motor | 12v | 24v

Specifications

- Configurable for clockwise or counterclockwise park by changing their terminal location in the mating wiring harness
- Brass pivot body, stainless steel shaft
- Marine grade specifications



Available on Indent

Stall Torque	Shaft Length mm	Shaft	Sweep°
12Nm	25 mm 50 mm 75 mm	12 mm Straight	65° 85° 100° 110°

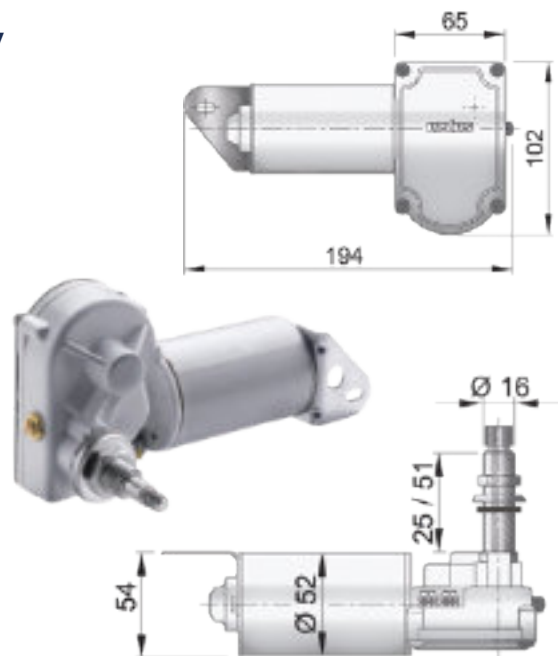
Vetus Series Wiper Motor | 12v | 24v

	Voltage	Shaft Length	Shaft
RW01A	12V	51 mm	STRAIGHT
RW02A	24V	51 mm	STRAIGHT
RW08A	12V	25 mm	STRAIGHT
RW09A	24V	25 mm	STRAIGHT
* DIN1250	12V	51 mm	TAPERED
* DIN2450	24V	51 mm	TAPERED
* DIN1225	12V	25 mm	TAPERED
* DIN2425	24V	25 mm	TAPERED

* Available on Indent

Specifications

- Output 30 Watt
- Suitable for panel thickness from 3 to 13 mm (25 mm, short shaft) or 3 to 38 mm (51 mm, long shaft)
- Cover available - reduces the panel thickness by 3mm, complete
- Type RW with straight knurled stainless steel shaft end of Ø 13,5 mm, 72 teeth
- Type DIN with tapered and knurled stainless steel shaft according to DIN 72783



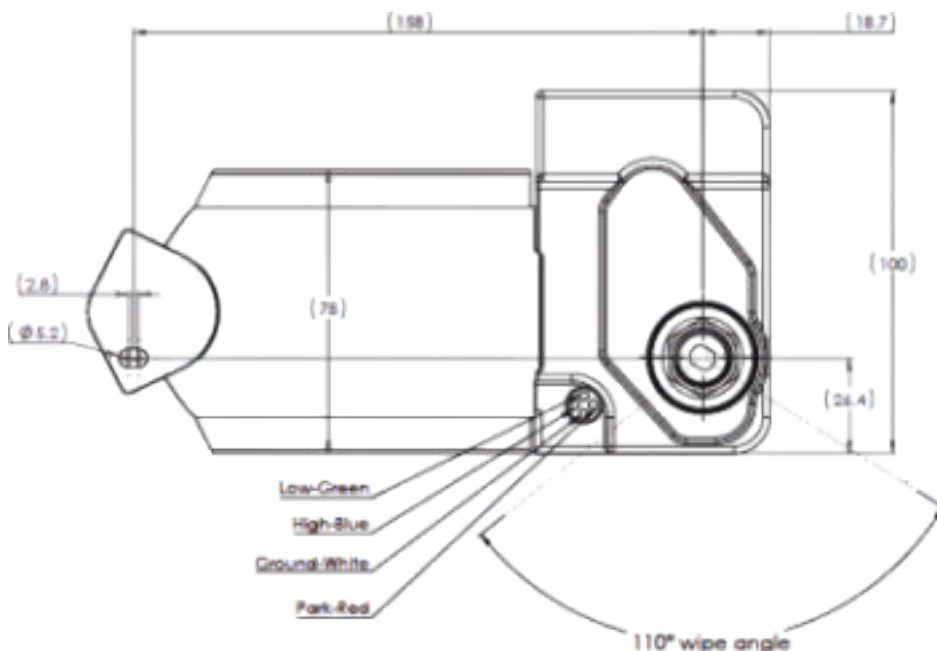


4A Sealed Motor Oscillating Wiper Motor

- Sealed with powder coated aluminum cover.
- IP66 standard | CE certified.
- Left hand or right hand park adjustable.
- Sweeps from 40°. Default 110°.
- Radial or Pantograph arms - requires pantograph adaptor

Voltage	Torque	Shaft	Shaft (mm)	Sweep°	Max Arm / Blade	Speed	IER
12 24	18Nm	½" drum	1.5" 2.5" 3.5"	40° - 110°	up to 600 mm	2 + park	√
12 24	18Nm	M8-12	1.5" 2.5" 3.5"	40° - 110°	up to 600 mm	2 + park	√

Sweep°	wiper arm length in mm						wiper blade length in mm
	305	355	405	457	508	560	
40°	660	660	660	660	660	533	
50°	660	660	660	609	558	508	
60°	610	610	533	457	431	406	
70°	635	609	533	457	406	381	
80°	584	508	431	381	330	304	
90°	558	482	431	381	330	304	
100°	533	457	406	355	330	304	
110°	508	431	381	330	304	279	



Assorted Motors



Bosch	Part #	Voltage	Torque	Shaft	Mount	Speed	IER
	101250/1	12	2Nm	M6-8	3 x M6	1 + park	√
	101250/3	24	2Nm	M6-8	3 x M6	1 + park	√
	65008800	12	30Nm	9.3 mm	3 X M6	2 + park	√
	101208/1	12	30Nm	M8-10	3 X M6	2 + park	√
	65008900	24	30Nm	M8-10	3 X M6	2 + park	√
	65008500	12	50Nm	M8-10	3 X M6	2 + park	√
	65008600	24	50Nm	9.3 mm	3 X M6	2 + park	√
	100865/2	24	50Nm	M8-10	3 X M6	2 + park	√
	100714/2	12	80Nm	13.26 mm	3 x M8	2 + park	√
	100712/2	24	80Nm	13.26 mm	3 x M8	2 + park	√
	100726/1	24	110Nm	15.8 mm	3 x M10	2 + park	√
	100726/2	24	110Nm	15.8 mm	3 x M10	2 + park	√

Which Wiper Motor?

Wiper motors are rated by stall torque. This is usually expressed in Newton meters (Nm)

A 38Nm motor is recommended for arm and blade combinations of 710 mm and longer and for multiple arms and blades driven by one motor.

A 30Nm motor is suitable for arms and blades in the 500 mm - 710 mm range.

A 12Nm or 8Nm motor is appropriate for arm and blade combinations of 400 mm and under.

Often motors of 20Nm or less have internal linkage to make the necessary oscillating motion.

Hepworth Linkage Systems

Bosch				
Spindle Vari Arc	68005xx		650087xx	
Shaft	16 DIN		12 DIN	
Liner	57mm up to 135 mm		57 mm up to 200 mm	
Bearing	12 mm rose	3/8" rose		
			Idler Plate Gasket	
Idler	60119xx		680034xx	
Shaft	12 DIN		16 DIN	
Liner	80 mm up to 110 mm		57 mm up to 135 mm	
CRS			60 mm	

Marine Motor PN #	Voltage	Torque	Shaft din	Shaft (mm)	Sweep	Speed	TRU VISION
WEM1530-TM-60-60	12	30Nm	M8-12	60	60°	2 + park	
WEM1530-TM-60-75	12	30Nm	M8-12	60	60°	2 + park	
WEM1530-TM-80-50	13	30Nm	M8-12	80	50°	2 + park	
WEM1530-TM-80-72	12	30Nm	M8-12	80	72°	2 + park	
WEM1830-12V-50-75	12	65Nm	M8-12	75	50°	2 + park	
WEM1930-12V-80-75	12	65Nm	M8-12	75	60°	2 + park	
WEM1930-12V-80-75	12	65Nm	M8-12	75	80°	2 + park	
WEM2530-TM-60-60	24	30Nm	M8-12	60	60°	2 + park	
WEM2530-TM-60-75	24	30Nm	M8-12	60	75°	2 + park	
WEM2530-TM-60-90	24	30Nm	M8-12	60	90°	2 + park	
WEM2530-TM-80-60	24	30Nm	M8-12	80	60°	2 + park	
WEM2530-TM-80-75	24	30Nm	M8-12	80	75°	2 + park	
WEM2930-24V-80-75-LH	24	65Nm	M8-12	75	80°	2 + park	
WEM2930-24V-80-75-RH	24	65Nm	M8-12	75	90°	2 + park	
WEM2930-TM-24V-90 120w	24	65Nm	M8-12	75	90°	2 + park	
WEM1230 BA	12	9Nm	M8-10	8	45° - 110°	Built in	
WEM2230B BA	24	9Nm	M8-10	8	45° - 110°	Built in	
TCM1233-xx	12	18Nm	13.2	51 - 76	45° - 110°	Coast to park	
TCM2233-xx	24	18Nm	13.2	51 - 76	45° - 110°	Coast to park	

Circuit Protection

A 12v DC motor draws about 5 amps during normal use. With heavy loads - such as windy conditions, this will increase.

A 10 amp circuit breaker for one motor, or a 15 amp circuit breaker for a two motor system is recommended.

Use a 5 amp breaker for one 24v motor and a 7 amp breaker for two motors.

Coast to Park and Dynamic Park motors

A motor with a dynamic (automatic) park feature will continue to run after it is turned off by a switch until it reaches its pre-determined park position, and then it will shut itself off. When the wiper reaches its assigned park position it electrically locks into place. The park position is always the same.

A coast to park motor is internally disconnected when switched off. It coasts to a stop because the motor brushes are de-energised. The park position may vary several degrees each time.

Dynamic park and coast to park require specific motors, switches, and wiring circuits.

Right or Left Hand park

Right or Left Hand park or also known as clockwise (CW) and counterclockwise to park (CCW).

When looking at the windscreen from the outside, looking bow to stern, the wiper arm and blade travel in a clockwise direction or counterclockwise direction to park.

Vetus Wiper Blade



PN#	Length mm	Shaft
WBBxx WBSxx	305 410 508	7 mm bayonet

Wiper blade type WBB and WBS

- Fit almost all makes and types of wiper arms with a 7,2 x 2,5 mm bayonet
- The metal parts of these blades are made of AISI 316 stainless steel, either high-gloss polished or black coated.
- They are available in lengths of 305, 410 or 508 mm.

Vetus Wiper Arms

Wiper arm types SSA and DINS | RWA and DINP

- Adjustable single / dual wiper arms
- Spade connector 7.2 x 2.5 mm
- Spindle centres 45 mm
- These wiper arms are made of high-gloss polished AISI 316 stainless steel.
- Black wiper arms are finished in a black to-grade synthetic material.

PN#	Length	Shaft
RWAS SSAS	280 - 386	Straight
RWAL SSAL	395 - 481	Straight
RWAX SSAX	473 - 559	Straight
RWAD SSAD	280 - 393	Straight
RWADX SSADX	386 - 476	Straight
DINPS DINSS	280 - 386	Tapered
DINPL DINSL	395 - 481	Tapered
DINPX DINSX	473 - 559	Tapered
DINPD DINSD	280 - 393	Tapered
DINPDX DINSDX	386 - 476	Tapered



RWA - Straight DINP - Tapered



SSA - Straight DINS - Tapered



Roca

		W12	W38
	Voltage	12v 24v	12v 24v
	Torque	12Nm	38Nm
	Shaft length	42 64 90 mm	38 64 mm
	Sweep	45° -110°	45° -110°
	IER	√	√
	Speed	2 speed self parking	2 speed self parking - left or right



Part # W12 Motor	Length mm	Drive Shaft	Idle Shaft	Bridge	Connection
Arm 538624	324 - 591	∅13.8 mm	∅13.8 z=72	50 mm	J Hook
Arm 538318	454 - 591	∅13.8 mm	∅13.8 z=72	50 mm	J Hook
Arm Radial 538617	319 - 458	∅13.8 z=72			J Hook
Arm Radial 538624	240 - 305	∅13.8 z=72			J Hook

Part # W12 Motor	Length mm	Connection	Finish
Blade 5209***	280 355 405	J Hook + connectors	Zinc Plated Steel Black
Blade 520***	508 430 560	J Hook + connectors	Zinc Plated Steel Black



Part # W38 Motor	Length mm	Drive Shaft	Idle Shaft	Bridge	Blade Clip
Arm 538330	470 - 750	13.8	∅13.8 z=72	60 mm	16 mm
Arm 538430	470 - 750	13.8	13.8	60 mm	16 mm
Arm 538335	620 - 900	13.8	13.8	60 mm	16 mm

Part # W38 Motor	Length mm	Saddle	Finish
5208***	610 710 760	Bolt	Stainless Black
520***	838 890 965	Bolt	Stainless Black

Pantograph

½" Drum



Double Flat Shaft
Tapered Knurled



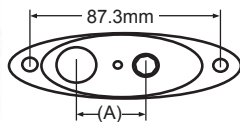
Arm	Length mm	Driver Shaft	Idler Head	Bridge mm	Blade Clip
761-2875	710	16 mm	6 mm	31.75 44.45	Hook or Bolt
761-2900	740	16 mm	6 mm	31.75 44.45	Hook or Bolt
761-3101	790	16 mm	6 mm	31.75 44.45	Hook or Bolt



HDP-1	Length mm	Driver Shaft	Idler Head	Bridge mm	Blade Clip
	560 up to 910	16 mm	16 mm	60 mm	13.7 mm

- EFEX Thermoplastic-coated spring for superior corrosion resistance
- Compression spring tension is custom calibrated for each application
- UV stabilised composites
- Internally mounted washer hose is hidden from view, reducing snagging
- Intergrated spray nozzle
- Stainless Steel, galvanised with black powder coat.
- Flexible for flat or curved screens


Pantograph Plate

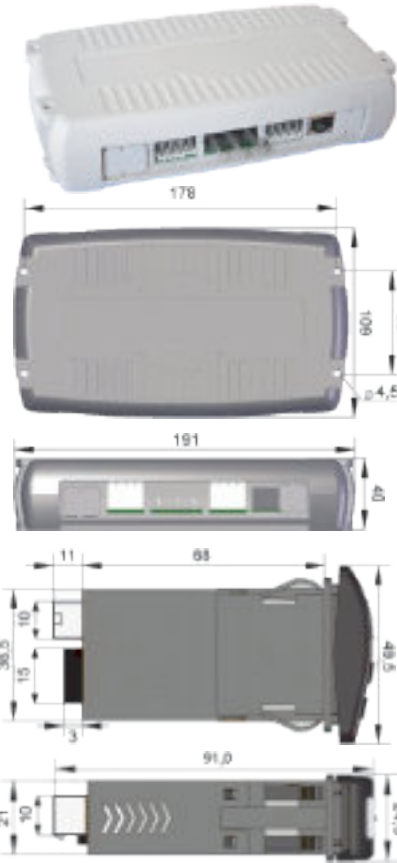


	305-1002	305-1007	65201700	60044401	60847202
Shaft	M6	M6	M8	7/16-24NS	12DIN
Liner				25 mm	25 mm
CRS	31.8 mm	44.5 mm	50 mm	50 mm	50 mm

Control Box & Switch: 532043 532202	
Voltage	12 24
Speed	Low High Intermittent
Controls	Two wipers single or synchronised
Wash	Solenoid or pump



Multi-Function Wiper Switch	CT41DBHITA	CT42DBHITA 12 - 24 VOLT DC
	4 Positions	Off / Park 1 Intermittent 2 Speed - Low High
		Wash Wiper program
	Dual voltage	12 - 24 volt DC
	Park	Self parking or dynamic park
		Dimmer input
		Single motor







3 intermittent speed
 one or two continuous speeds
 motor brake
 washing program
 dimmer input
 Plug-in connector
 Fast-on contacts for motor connections


Multi-Function 2 motor wiper switch CT42P	
Power Supply	10v to 30v DC
Internal Fuses	12A PTC for each motor
Stand-by current	Less than 20 mA
Protections	Polarity inversion
Motors - output currents	Single or double speed - each motor 12 amps max
Inputs	2 parking switches (open in park position Dimmer
Outputs	2 slow - L & R SLOW 2 High speed - L & R FAST (if 2 speed motors) 1 wash pump (positive pole)
Functions	3 Intermittent settings 2 continuous speeds: slow & high speed Wash/wiper program
Connections	Relay box
	2 x 4 poles connector
	3 x female 6.3 mm fast-on
	1 x 8 poles connectors RJ45 (can bus network)
Console	1 x 4 poles Minifit conn.
	1 x 8 poles connectors RJ45 (can bus network)
Case	Relay box Grey ABS
	Switch Black ABS
Working temperature	-10°C/+50°C
Storage temperature	-20°C/+70°C


Control Switches




Three Position Switch	Speed	Panel Depth	Switch Current		
HDMSW2- rocker	2 + park	7 mm (max)	20 amps (max)		
HDMSW - rotary	2 + speed	6 mm (max)	20 amps (max)		
Available as rotary or rocker type switch single motor					

TC75228-03		TC75221-09		Heavy Duty Switches		
Voltage	12v 24v					
Park	2 speed + park Dynamic	2 speed + park Non Dynamic				
Case Dims	ø35 mm 10 mm stem		ø41 mm 11mm stem			
Wash	Push to wash					
Terminals	6		5			
				TC75228-03	TC75221-09	

Multi Speed Control Switch & Plate Heavy Duty				
Voltage	12 24 DC	Negative ground only		
4 Positions	4 Off / Park Intermittent Low High			
Wash/wiper program	Push knob - one to three wipes after push			
Dimensions	56 - 35 mm square	46.04 mm long		
Mounting	Stem: 11.11 mm	28 thread 11.43 mm long		

Coast to Park or Dynamic Park with Dimmer				
75600-04	12 V			
75602-04	24 V			
10166600	24 V	Heavy duty suit 50 & 80Nm		
90087010	24 V	Heavy duty with fascia plate		
10095400		Facia Plate		
		10095400		

CT41		CT42		
Voltage	10v to 30v DC			
Internal fuses	4 amps PTC for each motor			
Stand-by current	Less than 20mA			
Protection	Polarity inversion			
Motors - output currents	Single or double speed 4 amps maximum	Single or double speed - each motor 4 amps maximum		
Functions	3 intermittent settings: 2 continuous speeds: slow & high			
Wash/wiper program	Wash/ wiper program			
Connections	10 poles: 2 male 6.3 mm fast-on			
Park	Coast to Park or Dynamic Park with dimmer			

Washer Equipment




PN#	Details		Bottles
	15057400 +1x 12v	Voltage	12v 24v
	15057500 +1x24v	Litre	5 L
	15067600 +2x12v	H x W x D (mm)	182 x 330 x 125
	15057700 +2x24v	Pumps	1 2 3
	15057800 +3x12v		
	15057900 +3x24v		
	103.765	Voltage	24v
		Litre	3.2 L
		H x W x D (mm)	215 x 260 x 110
		Kit	1 pump 2 jets connectors & hose
	TCXD-2 190x150x90	Voltage	12v 24v
	TCXD-4 160x250x104	Litre	2L 4L 5L 15L
	TCXD-5 280x310x130	Pump	single
	TCXD-6 190x400x240		
	TCXD-15 150x400x240		
	21.107	Voltage	12v
		Litre	1.2 L
		H x W x D (mm)	200 x 128 x 86
		Pumps	single
		Kit	Tubing switch T piece jets bracket
	19WWK	Voltage	12v
		Litre	1 L
		H x W x D (mm)	200 x 128 x 100
		Kit	Tubing switch T piece jets bracket
	EWP16	Voltage	12v
		Litre	1 L
		Pump	single
		Kit	Tubing switch T piece jets bracket

Washer Equipment



PN#		Details		Bottles
W501 12v	Voltage	12v 24v		
W514 24v	Litre	1.45 L		
	H x W x D (mm)	217 x 140 x 86		
	Pumps	single		
	Kit	Tubing switch T piece jets bracket		
W512 24v	Voltage	12v 24v		
W5000 12v	Litre	1.7 L		
	H x W x D (mm)	125 x 195 x 108		
	Pumps	Single		
	Kit	Tubing switch T piece jets bracket		
400711AT	Voltage	12V		
	Litre	2 L		
	H x W x D (mm)	188 x 136 x 132		
	Pump	single		
4007135AT	Voltage	12V		
	Litre	4 L		
	H x W x D (mm)	254 x 220 x 123		
	Pump	single		
400715AT	Voltage	12v		
	Litre	4 L		
	H x W x D (mm)	193 x 241 x 140		
	Pump	single		
Connectors Washing Tube		PN#		
	TCIL		Inline joiner	
	TCTP		Tee piece	
		TVOWV		One way valve
	80200400		3 mm ID	
	80200500		4 mm ID	
	19481		4.76 mm ID	

Washer Equipment

Bottles	PN#	Details	
	232.1003.20.00	Voltage	12v 24v
	232.1003.30.00	Litre	2.1 L
	232.2002.20.00	H X W X D (mm)	220 x 152 x 100
	232.2003.30.00	Pumps	1 2
	235.1002.20.00	Voltage	12v 24v
	235.1002.30.00	Litre	5L
	235.2002.20.00	H X W X D (mm)	181.5 x 306 x 125
	235.2002.30.00	Pumps	1 2 3
	238.1002.20.00	Voltage	12v 24v
	238.1002.30.00	Litre	8L
	238.2002.20.00	H X W X D (mm)	302 x 306 x 125
	238.2002.30.00	Pumps	1 2 3

Washer Equipment



PN#	Details	Voltage	Washer Pumps
CL209M	Bulkhead mount	12v	
CL209N		24v	
TV010.00.12	Bulkhead mount	12v	
TV010.00.24		24v	
EWP13	Bulkhead mount	12v	
EWP14		24v	
80825	Bulkhead mount	12v	
80826		24v	
CL508M	Bottle mount	12v	
CL508N	Fits FDA bottles	24v	
201.0002.20.00	Bottle mount	12v	
201.0002.30.00	Fits DOGA & Hepworth bottles	24v	
TCWP12	Bottle mount	12v	
TCWP24	Fits TXCD bottles	24v	
3464514015.12	0.8 - 10 Bar	12v	
3464514015.24		24v	
			Solenoid Valve
433839	0-10 bar	12v	
134237		24v	

Washer Equipment

Bulkhead connectors		PN#	Details	
		15030600	Twin jet	Pivot head fit
		80201001	Twin Spray head	Channel fit
		80200100	Twin Spray head	Bracket fit
		TV75400	Twin Spray head	1.3m tubing
		120.5005.39.00	Triple jet	Left head fit
		120.5025.39.00	Triple jet	Right head
		TCWJ-01	Triple jet	Left head fit
		TCWJ-02	Tripe jet	Right head fit
		TCJET881	Travelling jet	Bracket fit
		TCJET777-P	Single jet	Channel fit
		TCJET777-D		
Bulkhead connectors		PN#	Details	
		60250401	Transsom mount	10 mm
		60250402		30 mm
		60250403		42 mm
		60250405		82 mm
		TCE01	Elbow connector	12 mm
		TCE02		20 mm
		TCE03		50 mm
		TBFC03	Brass	15 mm
		TBFC02		30 mm
		TBFC01		45 mm
WP7 Twin jet	121.5005.39.CO Twim spray	TCB001 Bug Eye Jet	WP12 Twin jet	
				



SCREEN WIPER SOLUTIONS

40 Ascot Road, Māngere, Auckland 2022

Email: sales@sws.co.nz | Phone: 027 487 3583